

CUCAMONGA VALLEY WATER DISTRICT

PROJECT TITLE PROJECT SUB-TITLE

GENERAL NOTES

- ALL WATER, SEWER, AND RECYCLED WATER LINES SHALL BE CONSTRUCTED IN ACCORDANCE WITH THE CUCAMONGA VALLEY WATER DISTRICT'S STANDARD DRAWINGS FOR THE CONSTRUCTION OF SYSTEM FACILITIES AND THE LATEST EDITION OF THE STANDARD SPECIFICATIONS FOR PUBLIC WORKS CONSTRUCTION. ALL DISTRICT STANDARDS ARE AVAILABLE DIRECTLY OR BY REFERENCE AT WWW.CVWD.WATER.COM/DEVELOPMENT
- THE CONTRACTOR IS RESPONSIBLE FOR SECURING FROM THE CUCAMONGA VALLEY WATER DISTRICT COPIES OF THE LATEST STANDARD DRAWINGS FOR THE CONSTRUCTION OF SYSTEM FACILITIES PRIOR TO START OF CONSTRUCTION.
- ANY CONTRACTOR PERFORMING WORK ON THIS PROJECT SHALL FAMILIARIZE THEMSELVES WITH THE SITE AND SHALL BE HELD SOLELY RESPONSIBLE FOR ANY DAMAGE TO EXISTING FACILITIES RESULTING DIRECTLY, OR INDIRECTLY, FROM THEIR OPERATIONS, WHETHER OR NOT SAID FACILITIES ARE SHOWN ON THESE PLANS. THE DISTRICT MAY, AT ITS SOLE DISCRETION, DETERMINE A DEVELOPER'S CONTRACTOR IS UNABLE OR UNWILLING TO PERFORM REPAIRS. IN THIS CASE, THE DISTRICT CAN ASSIGN ITS OWN STAFF OR AN EMERGENCY CONTRACTOR TO PERFORM REPAIR WORK AT THE EXPENSE OF THE DEVELOPER'S CONTRACTOR.
- THE DEVELOPER SHALL HAVE THEIR ENGINEER AND/OR CONTRACTOR VERIFY THE ELEVATIONS OF ALL EXISTING WATER MAINS AND MANHOLE INVERTS AT POINTS OF CONNECTION PRIOR TO ANY CONSTRUCTION OF FACILITIES. ANY NECESSARY CHANGES OF WATER LINE DEPTH, MANHOLE DEPTH, OR DESIGNED SLOPE OF THE SEWER LINE SHALL BE SUBMITTED TO THE CUCAMONGA VALLEY WATER DISTRICT FOR REVIEW AND APPROVAL PRIOR TO START OF CONSTRUCTION. DISCOVERY OF ANY DISCREPANCIES AFTER THE START OF CONSTRUCTION MAY RESULT IN A SUSPENSION IN CONSTRUCTION UNTIL A REMEDY IS APPROVED BY THE DISTRICT.
- THE CONTRACTOR SHALL BE REQUIRED TO OBTAIN THE NECESSARY PERMITS FROM THE APPROPRIATE LOCAL AGENCIES PRIOR TO ANY CONSTRUCTION WITHIN ANY STREET, RIGHT-OF-WAY, OR EASEMENT.
- THE MINIMUM SEPARATION BETWEEN WATER LINES AND SANITARY SEWER LINES SHALL CONFORM TO THE STATE OF CALIFORNIA ENVIRONMENTAL HEALTH CODE, TITLE 22.
- TRENCH RESTORATION AND PAVEMENT REPAIR SHALL BE IN ACCORDANCE WITH THE STANDARDS AND SPECIFICATIONS OF THE APPROPRIATE LOCAL AGENCY.
- THE CONTRACTOR SHALL BE RESPONSIBLE TO NOTIFY UNDERGROUND SERVICE ALERT (811) AT LEAST TWO WORKING DAYS (48 HOURS) PRIOR TO START OF CONSTRUCTION.
- FOR WATER, SEWER, OR RECYCLED WATER SYSTEM INSPECTION ON THIS PROJECT, THE CONTRACTOR SHALL CONTACT THE CUCAMONGA VALLEY WATER DISTRICT AT (909) 987-2591, TWO WORKING DAYS PRIOR TO THE REQUIRED INSPECTION DATE.
- THE CONTRACTOR SHALL RETURN A LEGIBLE AND CLEAN SET OF "AS BUILT" DRAWINGS TO THE CUCAMONGA VALLEY WATER DISTRICT PRIOR TO FINAL ACCEPTANCE OF ANY SYSTEM.
- APPROVAL OF THESE PLANS BY THE CUCAMONGA VALLEY WATER DISTRICT DOES NOT CONSTITUTE A REPRESENTATION OF THE ACCURACY OR EXISTENCE OF ANY EXISTING UNDERGROUND FACILITIES, WHETHER OR NOT SAID FACILITIES ARE SHOWN ON THESE PLANS.

WATER GENERAL NOTES

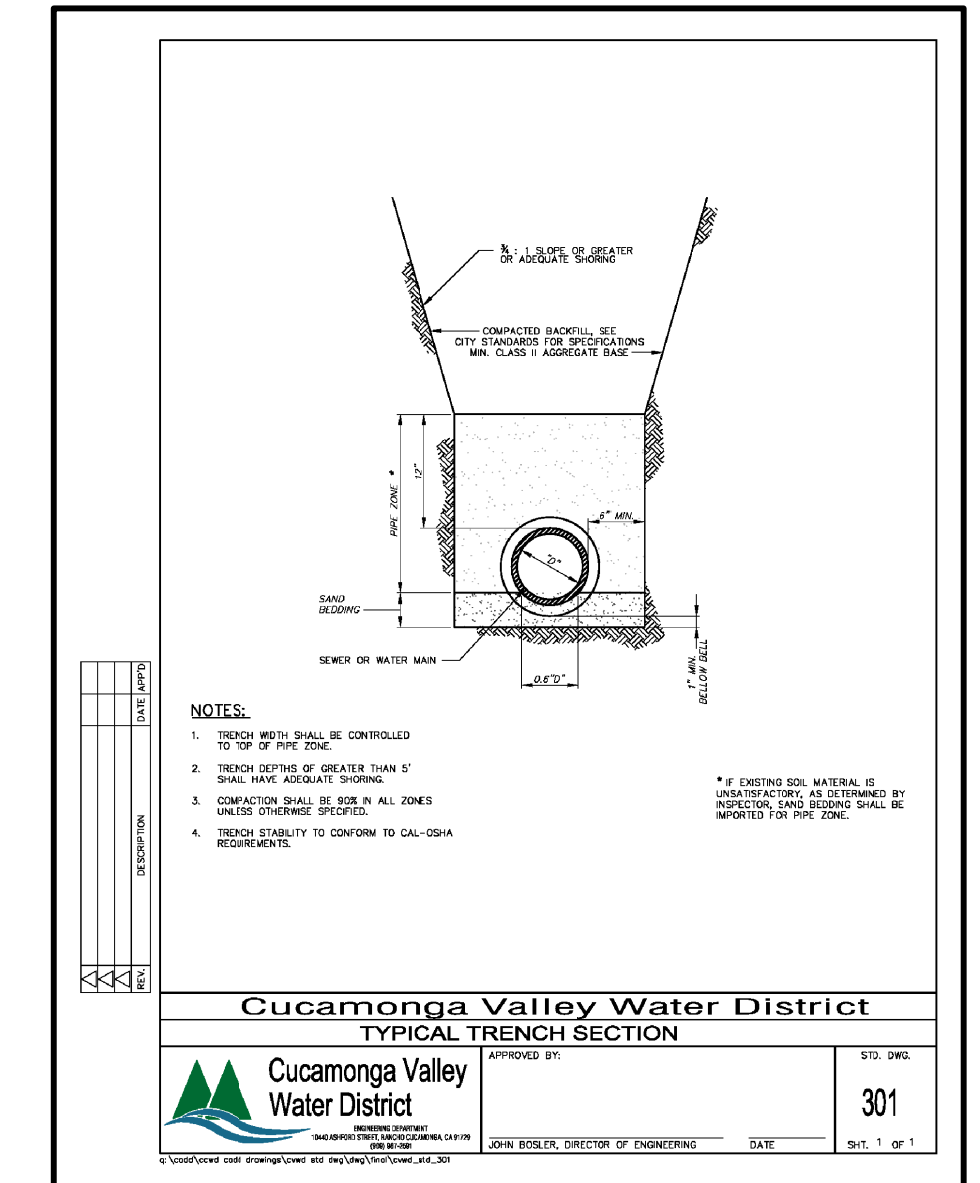
- ALL WATER LINES SHALL BE CEMENT MORTAR LINED AND COATED STEEL PIPE IN ACCORDANCE WITH ANSI/AWWA SPECIFICATION C205-00. ENGINEER MUST FURNISH CALCULATIONS TO CONFIRM MINIMUM WALL THICKNESS CONFORMS TO AWWA M11 PRIOR TO APPROVAL OF PLANS. ALL MATERIALS IN CONTACT WITH WATER SHALL BE NSF 61 APPROVED.
- THE APPROXIMATE MINIMUM AND MAXIMUM STATIC WATER PRESSURE AVAILABLE TO SERVE THE SUBJECT DEVELOPMENT IS _____ P.S.I. AND _____ P.S.I., RESPECTIVELY.
- PRESSURE REGULATING VALVES ARE REQUIRED FOR EACH SERVICE WHERE THE WATER SYSTEM PRESSURE EXCEEDS 80 P.S.I. (SEE NOTE #5). SEE STANDARD DRAWING 111.
- ALL WATER METER SIZES SHALL BE (DOMESTIC) AND (LANDSCAPE).
- THE MINIMUM COVER FOR 6-INCH AND 8-INCH WATER LINES SHALL BE 30 INCHES, 10-INCH WATER LINES SHALL BE 36 INCHES, 12-INCH WATER LINES SHALL BE 42 INCHES, AND 16-INCH WATER LINES AND ABOVE SHALL BE 48 INCHES.
- ALL FIRE HYDRANT LOCATIONS SHALL CONFORM TO THE STANDARD SPECIFICATIONS OF THE CITY OF RANCHO CUCAMONGA FIRE PROTECTION DISTRICT.
- THE CONTRACTOR PERFORMING THE WORK SHALL HAVE A CLASS C34 OR CLASS A GENERAL CONTRACTING LICENSE WITH RELEVANT WATER PIPELINE CONSTRUCTION EXPERIENCE.
- ALL WATER METER SERVICES FOR THE USE OF LANDSCAPE IRRIGATION OR PUBLIC DOMESTIC USE, OTHER THAN FOR RESIDENTIAL, SHALL HAVE INSTALLED AN APPROVED REDUCED PRESSURE PRINCIPAL BACKFLOW ASSEMBLY AS THE MINIMUM BACKFLOW PROTECTION REQUIREMENT.
- THE WATER CONTRACTOR SHALL BE RESPONSIBLE FOR OBTAINING AND INSTALLING DISTRICT FURNISHED METER BOXES.
- SAND BEDDING AND SAND BACKFILL IN THE PIPE ZONE IS REQUIRED.
- THE WATER CONTRACTOR SHALL ADJUST ALL GATE VALVE COVERS TO GRADE AFTER FINAL PAVING IS COMPLETED.
- PRIOR TO THE ACTIVATION OF ANY NEWLY CONSTRUCTED WATER LINES, OR ANY CONNECTIONS TO EXISTING SYSTEMS, HYDROSTATIC TESTING AND DISINFECTION SHALL BE PERFORMED IN ACCORDANCE WITH AWWA STANDARDS FOR INSTALLATION OF STEEL WATER PIPE AND DISINFECTION WATER MAINS C604 AND C651, RESPECTIVELY.
- ANY UNDERCUT SEWER PIPE WILL REQUIRE A ONE-SACK SAND SLURRY BACKFILL UP TO THE SPRINGLINE OF THE SEWER PIPE.
- THE CONTRACTOR SHALL NOT MAKE ANY CONNECTION TO THE EXISTING CVWD DISTRIBUTION SYSTEM WITHOUT FIRST GAINING WRITTEN PERMISSION FROM THE WATER DEPARTMENT ENGINEER. IN THE EVENT THAT PERMISSION IS GRANTED, A CVWD INSPECTOR MUST BE PRESENT ON-SITE TO WITNESS SAID CONNECTION(S).

SEWER GENERAL NOTES

- ALL SEWER LINES SHALL BE VITRIFIED CLAY PIPE (V.C.P.), UNLESS OTHERWISE SPECIFIED ON THE PLANS. PRIOR TO PLAN APPROVAL, THE DEVELOPER'S ENGINEER MUST DEMONSTRATE THE DESIGN SLOPE OF NEW SEWER MAINS WILL HAVE A VELOCITY OF TWO (2) TO SEVEN (7) FEET PER SECOND (FPS) UNDER NORMAL FLOW CONDITIONS. ANY SLOPE DEVIATION FROM THE PLANS MUST BE REQUESTED IN WRITING WITH REVISED VELOCITY CALCULATIONS. ONLY THE DISTRICT ENGINEER MAY APPROVE CHANGES TO DESIGN SLOPE.
- ALL SEWER LATERALS SHALL BE V.C.P., UNLESS OTHERWISE SPECIFIED ON THE PLANS. ALL HOUSES LATERALS SHALL BE 4 INCHES IN DIAMETER, WHILE LATERAL SIZING FOR OTHER FACILITIES (COMMERCIAL, INDUSTRIAL, APARTMENTS, ETC.) SHALL BE AS NOTED ON THE PLANS. ALL LATERAL CONNECTIONS TO THE MAIN LINE SHALL BE THROUGH A WYE CONNECTION, UNLESS OTHERWISE SPECIFIED ON THE PLANS.
- THE CONTRACTOR PERFORMING THE WORK SHALL HAVE A CLASS C42 OR CLASS A GENERAL CONTRACTING LICENSE WITH RELEVANT SEWER PIPELINE CONSTRUCTION EXPERIENCE.
- THE CONTRACTOR SHALL BE RESPONSIBLE FOR PROVIDING AND INSTALLING MANHOLE CHANNEL GUARDS IN ALL SEWER SYSTEMS AS DIRECTED BY THE DISTRICT ENGINEER.
- ROCK BEDDING AND ROCK BACKFILL IN THE PIPE ZONE IS REQUIRED.
- THE DEVELOPER SHALL HAVE THEIR ENGINEER VERIFY THE ELEVATIONS OF THE MANHOLES IN ANY PAVED SECTIONS TO ALLOW ANY NECESSARY ADJUSTMENTS TO THE MANHOLE FRAMES PRIOR TO PLACEMENT OF FINAL PAVEMENT.
- BACKWATER VALVES ARE REQUIRED ON ALL SEWER LATERALS. INSTALLATION OF BACKWATER VALVES SHALL CONFORM TO THE LATEST VERSION OF THE CALIFORNIA PLUMBING CODE.
- GREASE INTERCEPTORS ARE REQUIRED FOR THE PROPER MAINTENANCE OF LIQUID WASTE CONTAINING GREASE, SAND, SOLIDS, ACID OR ALKALINE SUBSTANCES, OR OTHER INGREDIENTS, WHICH MAY BE HARMFUL TO THE PUBLIC SEWER SYSTEM. INTERCEPTORS SHALL CONFORM TO STANDARD DRAWINGS 209, 210, OR 211 AS APPROVED BY THE DISTRICT ENGINEERING DEPARTMENT.

RECYCLED WATER NOTES

- CONTRACTOR MUST SUBMIT 1 HARD COPY OF THE IRRIGATION PLANS AND 1 PDF COPY OF THE IRRIGATION PLANS TO CVWD FOR APPROVAL, BEFORE CONSTRUCTING THE IRRIGATION SYSTEM.
- CVWD RECYCLED WATER APPLICATION AND PERMIT MUST BE FILLED OUT AND RETURNED TO CVWD PRIOR TO SERVICE BEING ACTIVATED.
- A TEMPORARY HI-LINE MUST BE USED OFF A CITY FIRE HYDRANT AS CLOSE TO THE POINT OF CONNECTION OF THE RECYCLED WATER SERVICE AS POSSIBLE.
- A CONSTRUCTION METER AND A TEMPORARY APPROVED RP BACKFLOW DEVICE, MUST BE INSTALLED AND BE TESTED BY CVWD PRIOR TO THE WATER BEING TURNED ON.
- THE TEMPORARY SYSTEM WILL BE USED UNTIL THE RECYCLED IRRIGATION SYSTEM HAS BEEN CONSTRUCTED AND COMPLETED.
- BOTH THE RECYCLED WATER IRRIGATION SYSTEM AS WELL AS THE POTABLE WATER SYSTEM HAS TO PASS A CROSS- CONNECTION TEST BY CVWD PRIOR TO RECYCLED WATER BEING TURNED ON FOR SERVICE.
- CVWD WILL INSPECT ALL RECYCLED WATER IRRIGATION MAIN LINES PRIOR TO BEING BURIED.
- PRESSURE TESTING OF ALL MAINLINES AT 150 PSI FOR 2 HOURS & MUST BE INSPECTED BY CVWD.
- ALL PIPING MUST BE PURPLE AND BE MARKED FOR RECYCLED WATER USE, INCLUDING DRIP SYSTEM PIPING.
- ALL IRRIGATION MATERIALS MUST BE MARKED FOR RECYCLED WATER USE.
- VALVE BOXES MUST BE PURPLE, FROM TOP TO BOTTOM AND MARKED FOR RECYCLED WATER USE.
- TYPE K COPPER PIPE OR BRASS PIPE MUST BE USED AND BE SLEEVED WITH PURPLE PLASTIC WRAP AND MARKED FOR RECYCLED WATER FROM THE BACK SIDE OF RECYCLED WATER METER TO 3FT PASSED PROPERTY LINE.
- QUICK COUPLERS MUST BE MARKED FOR RECYCLED WATER AND BE ACME THREAD TYPE.
- NO BACKFLOW DEVICES NEEDED ON A RECYCLED WATER SYSTEM. IN PLACE OF THE BACKFLOW DEVICE, A WYE STRAINER, PRESSURE REGULATOR, A BALL VALVE AND A QUICK COUPLER, MUST BE INSTALLED PER STANDARD DRAWING #410.
- ABSOLUTELY NO HOSE BIBBS OF ANY KIND SHALL BE INSTALLED TO A RECYCLED WATER SYSTEM.
- NO LOOPED IRRIGATION SYSTEMS SHALL BE PERMITTED, ONE SERVICE, ONE SYSTEM.
- THE HORIZONTAL DISTANCE BETWEEN THE POTABLE WATER LINE & RECYCLED WATER LINE SHALL BE 10FT. THE VERTICAL DISTANCE BETWEEN THE POTABLE WATER LINE AND THE RECYCLED WATER LINE SHALL BE 1FT. PER STANDARD DRAWINGS 306A & 306B.
- A RECYCLED WATER LINE THAT CROSSES OVER A POTABLE WATER LINE MUST BE SLEEVED WITH SCHEDULE 40 PURPLE PVC PIPE TWICE THE DIAMETER OF THE RECYCLED WATER LINE & MUST EXTEND 5FT ON BOTH SIDES, FOR A TOTAL OF 10 FT.
- CVWD WILL SUPPLY THE RECYCLED WATER DO NOT DRINK SIGNS ONLY AND THEY MUST BE INSTALLED BY THE CONTRACTOR PER STANDARD DRAWING# 402.
- SEPARATION OF PROPERTY MUST BE BY WALLS OR CONCRETE MOW STRIPS.
- DRINKING FOUNTAINS, PICNIC TABLES AND BENCHES SHALL NOT BE CONSTRUCTED IN AREAS WHERE RECYCLED WATER WILL COME IN CONTACT FROM OVER SPRAY.
- CONTRACTOR MUST SUPPLY AN IRRIGATION SITE MAP ON COMPLETION OF THE PROJECT.
- COVERAGE TESTING MUST COMPLETE AND PASSED WITH THE CONTRACTOR, WITHIN 48 HOURS AFTER THE RECYCLED WATER HAS BEEN TURNED ON FOR SERVICE.
- COLOR CODED IRRIGATION SITE MAP.
- THE APPROXIMATE MINIMUM AND MAXIMUM STATIC WATER PRESSURE AVAILABLE TO SERVE THE SUBJECT DEVELOPMENT IS _____ P.S.I. AND _____ P.S.I., RESPECTIVELY.
- ALL WATER METER SIZES SHALL BE _____ (LANDSCAPE).
- THE MINIMUM COVER FOR 6-INCH AND 8-INCH WATER LINES SHALL BE 30 INCHES, 10-INCH WATER LINES SHALL BE 36 INCHES, 12-INCH WATER LINES SHALL BE 42 INCHES, AND 16-INCH WATER LINES AND ABOVE SHALL BE 48 INCHES.



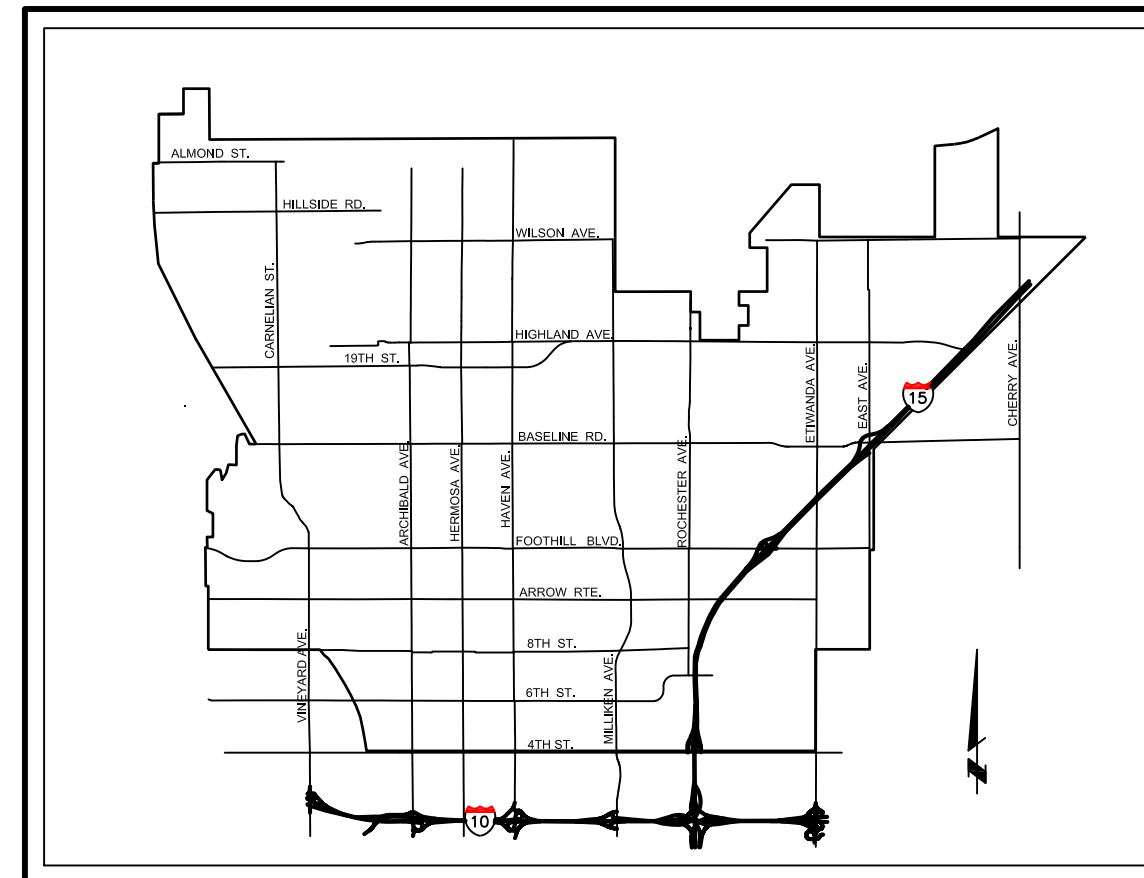
NOTICE TO DEVELOPER'S ENGINEER AND CONTRACTOR

AS-BUILT PLANS ARE FOR INFORMATIONAL PURPOSES ONLY AND AS-BUILT PLAN MAY NOT REFLECT ACTUAL FIELD CONDITIONS. THE EXISTENCE AND LOCATION OF ANY UNDERGROUND UTILITIES OR STRUCTURES SHOWN ON THESE PLANS ARE OBTAINED BY A SEARCH OF AVAILABLE RECORDS, TO THE BEST OF OUR KNOWLEDGE, THERE ARE NO EXISTING UTILITIES EXCEPT THOSE SHOWN ON THESE PLANS. THE CONTRACTOR IS REQUIRED TO TAKE DUE PRECAUTIONARY MEASURES TO PROTECT THE UTILITIES SHOWN ON THESE DRAWINGS. THE CONTRACTOR FURTHER ASSUMES ALL LIABILITY AND RESPONSIBILITY FOR UTILITY PIPES, CONDUITS, OR STRUCTURES SHOWN OR NOT SHOWN ON THESE DRAWINGS. ANY PROTECTION, RELOCATION, RE-DESIGN, OR REPAIRS THAT MAY BE PLANNED OR REQUIRED UPON DISCOVERY IN THE COURSE OF THIS PROJECT ARE THE SOLE RESPONSIBILITY OF THE DEVELOPER.

CONTRACTOR SHALL VERIFY THE LOCATIONS AND ELEVATIONS OF EXISTING SEWER LINE PRIOR TO START OF CONSTRUCTION. POTHOLES IS REQUIRED AT POINTS OF CONNECTION AND OVER ALL EXISTING FACILITIES CROSSINGS. RESULTS OF POTHOLES MUST BE PLOTTED ON THE ORIGINAL DRAWINGS AND SUBMITTED TO THE DISTRICT THREE (3) WORKING DAYS PRIOR TO THE START OF ANY TRENCH EXCAVATION. ANY DEVIATIONS FROM PROFILE MUST BE REVIEWED AND APPROVED BY THE DISTRICT PRIOR TO START OF CONSTRUCTION.

CONTRACTOR AND DEVELOPER ARE RESPONSIBLE FOR COMPLIANCE WITH THE APPROVED DRAWINGS AND ALL OF THE DISTRICT'S STANDARDS AND POLICIES. CONTRACTOR TO FAMILIARIZE THEMSELVES TO CUCAMONGA VALLEY WATER DISTRICT STANDARDS AND INSTALL FACILITIES PER SAID STANDARDS. IF THERE IS A DISCREPANCY BETWEEN THE APPROVED DRAWINGS AND DISTRICT STANDARDS, THE DISTRICT STANDARDS SHALL GOVERN UNLESS EXPLICITLY STATED OTHERWISE. TREE, SHRUBS, AND PLANTS MUST BE PLANTED AT LEAST 10' FROM ALL WATER AND SEWER FACILITIES.

ANY WATER OR SEWER FACILITIES NOT BEING USED BY THIS PROJECT MUST BE ABANDONED AS DIRECTED BY THE CUCAMONGA VALLEY WATER DISTRICT INSPECTOR, INCLUDING, BUT NOT LIMITED TO WATER METERS, WATER MAINS, SERVICE LINES, SEWER LATERALS, OR SEWER MAINS. DEVELOPER'S ENGINEER AND CONTRACTOR MUST CONDUCT A FIELD INSPECTION PRIOR TO CONSTRUCTION FOR ALL ABANDONMENTS INDICATED OR NOT INDICATED ON THIS PLAN. AT THE CLOSE OF THE PROJECT, DEVELOPER'S ENGINEER MUST PLOT ACTUAL FIELD CONDITIONS ON PROPOSED PLANS AND SUBMIT TO THE DISTRICT.



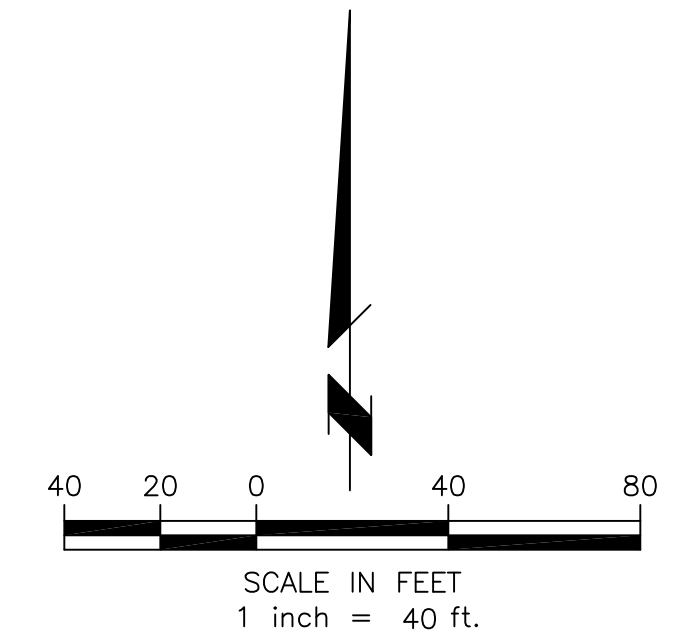
RANCHO CUCAMONGA FIRE DISTRICT

RANCHO CUCAMONGA FIRE PROTECTION DISTRICT

APPROVED DATE: _____

INSPECTOR, RANCHO CUCAMONGA FIRE DISTRICT

APPROVAL IS GRANTED FOR THE UNDERGROUND PUBLIC WATER MAINS, HYDRANTS, AND FIRE SERVICES ONLY. APPROVAL DOES NOT INCLUDE ANY ONSITE PRIVATE SPRINKLER PIPING OR APPURTENANCES.



Underground Service Alert

Call: TOLL FREE

811

TWO WORKING DAYS BEFORE YOU DIG

REV.				BENCH MARK:	CONTACT INFO:		DATE APPROVED:		DESIGNED BY:	DRAWN BY:	CHECKED BY:		SHEET	
							TUAN TRUONG, P.E. ENGINEERING MANAGER CUCAMONGA VALLEY WATER DISTRICT		XX	XX	XX		JOB TITLE	CVWD USE ONLY
									10440 ASHFORD STREET, RANCHO CUCAMONGA, CA 91729 (909) 987-2591	XX	XX		XX	SHT. XX OF XX